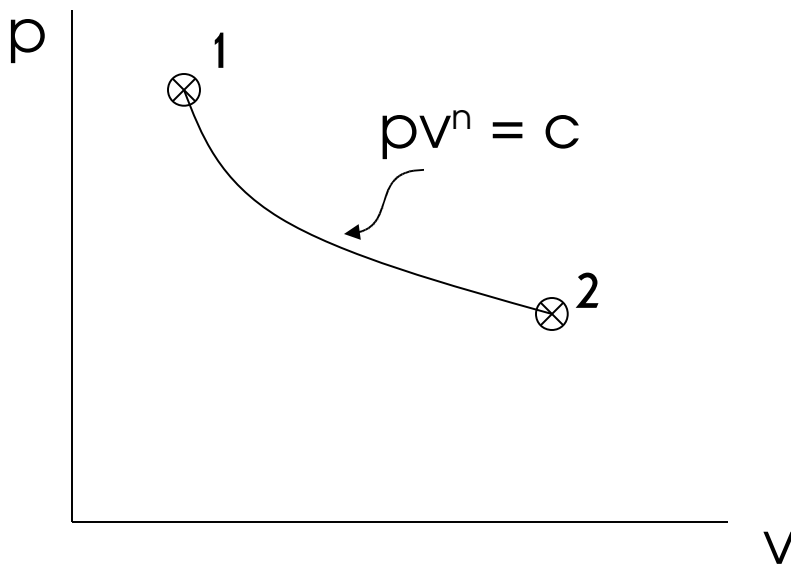


POLYTROPIC PROCESS

-Processes that obey/follow the path

$$pv^n = c$$

n = polytropic index $-\infty \leq n \leq \infty$



$$p_1 v_1^n = p_2 v_2^n$$

Some special cases for polytropic processes

$n = 1$ isothermal

$n = 0$ isobaric

$n =$ const. volume

Ideal Gas & Polytropic Process combined

$$\frac{T_2}{T_1} = \left(\frac{p_2}{p_1} \right)^{\frac{n-1}{n}} = \left(\frac{v_1}{v_2} \right)^{n-1}$$